



## The major keys of A, B<sub>b</sub>, and E<sub>b</sub> Dur-tonearterne A, B og Es

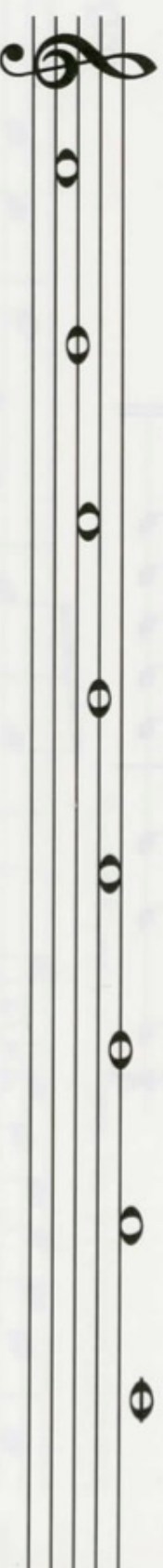
Add **accidentals** where they are needed to make these scales. (Do not use **key signatures**.) Then draw  over each pair of notes that make a **semitone**.

### Exercise 1



Tilføj **løse fortegn** hvor de er nødvendige for at danne følgende skalaer (Brug ikke **faste fortegn**). Derefter tegn  over hver af de nodepar som udspænder **en lille sekund**.

A major  
A-dur



B<sub>b</sub> major  
B-dur



E<sub>b</sub> major  
Es-dur

